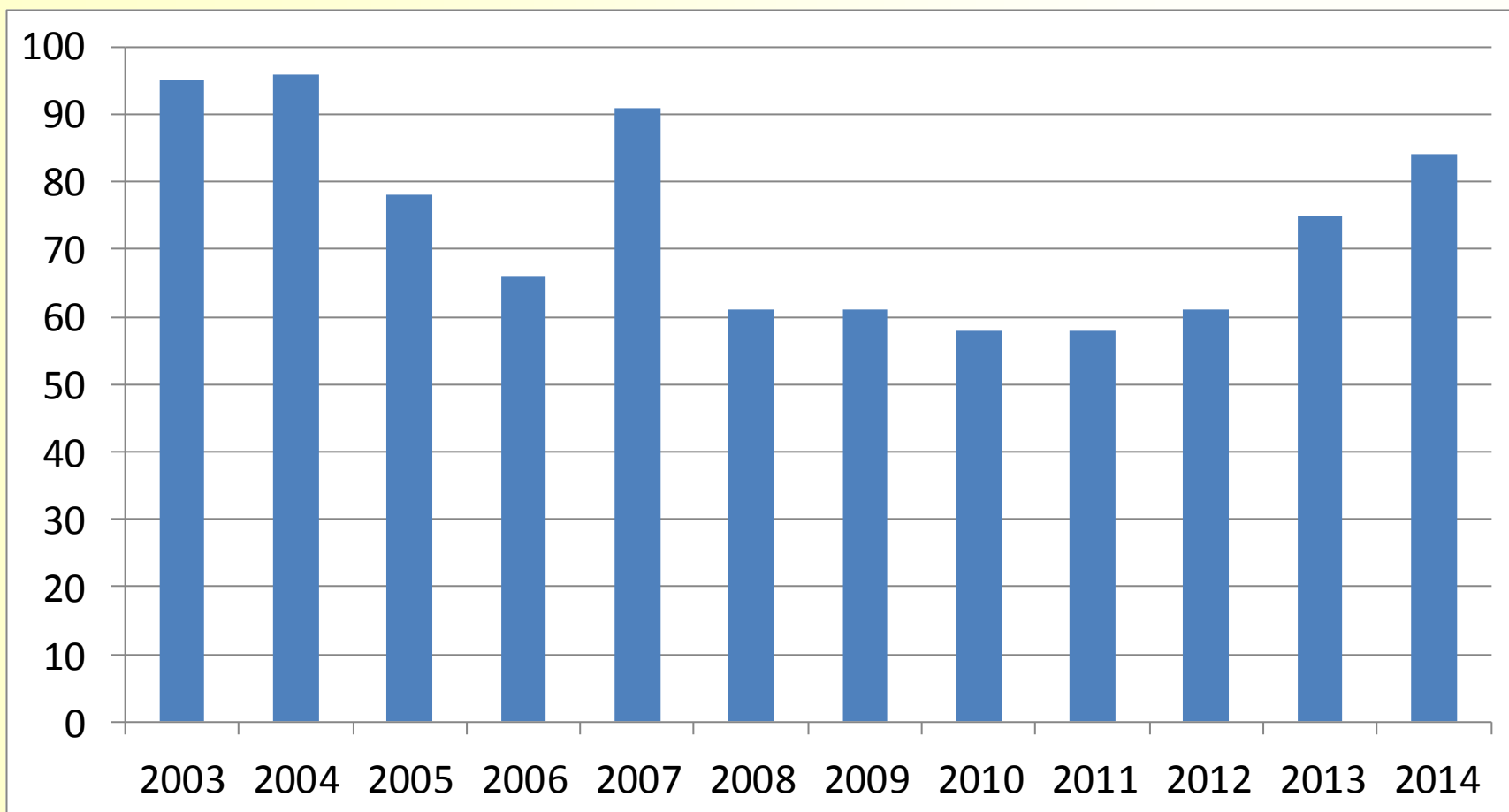


Harris Review - Out of Committee  
paper 82 – Paper prepared by Professor  
Louis Appleby for presentation to the  
Ministerial Board on Deaths in Custody  
in February 2015

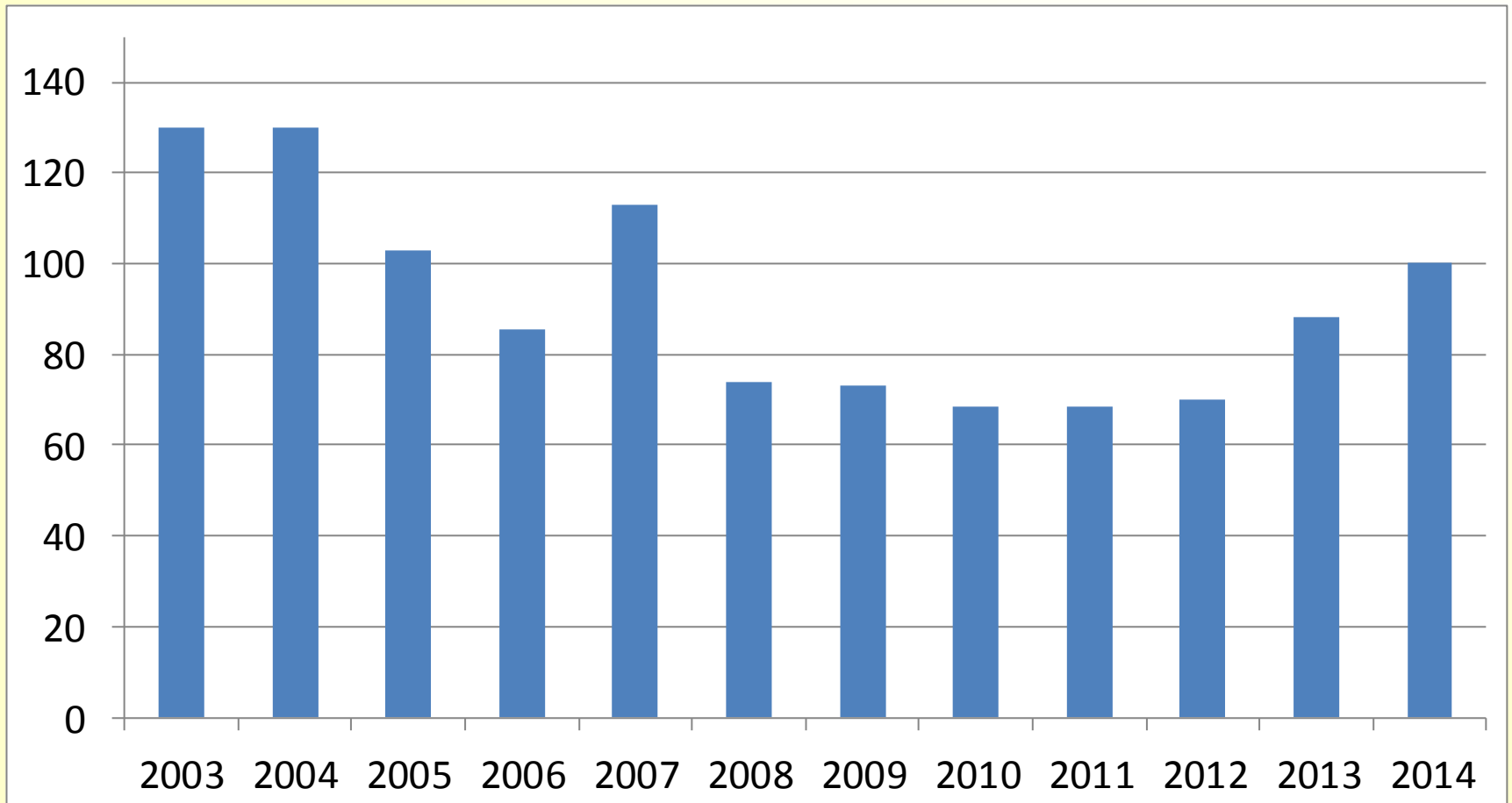
# Self-inflicted deaths in prison custody, England & Wales

12 months ending Dec, numbers

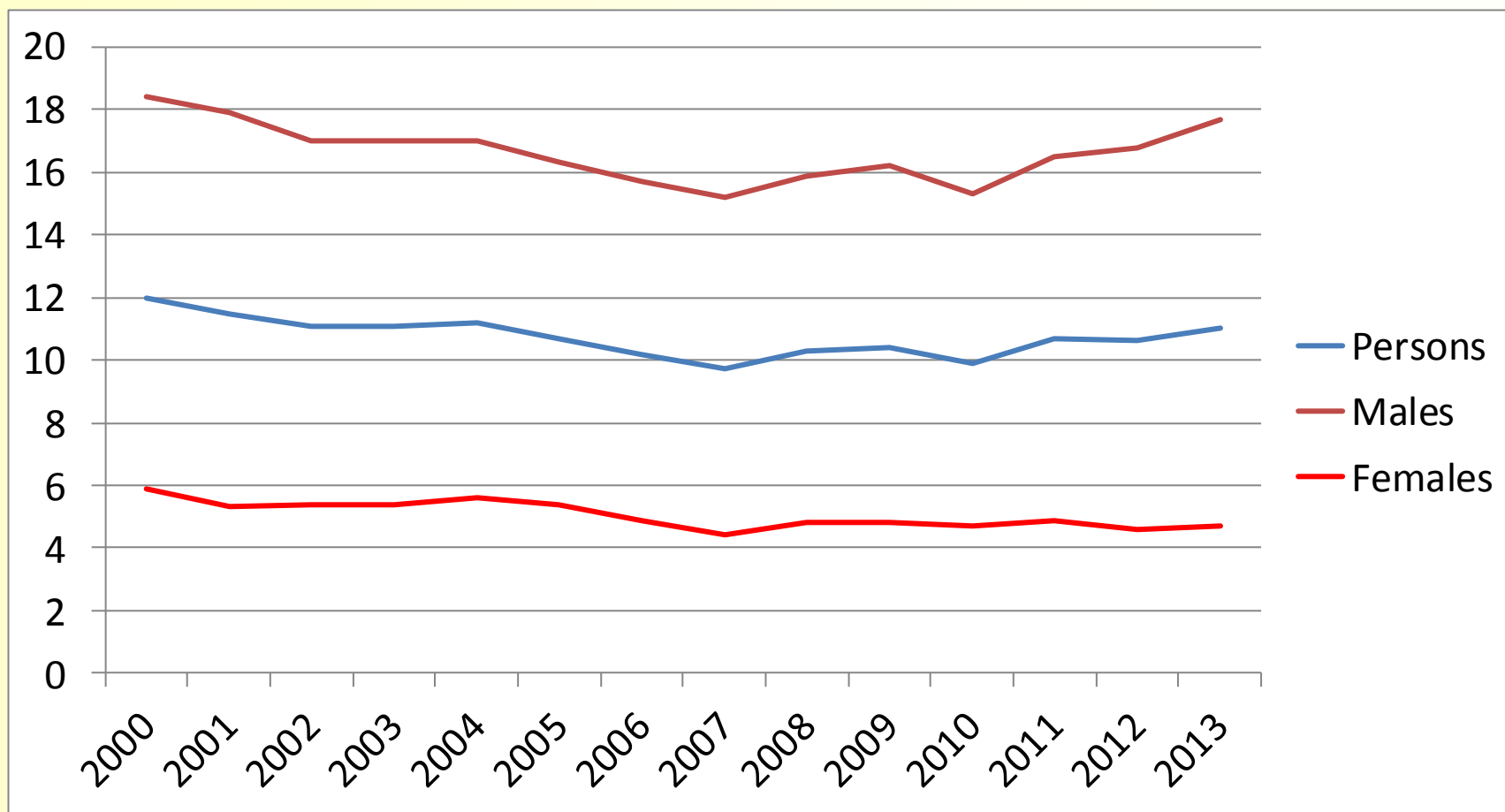


# Self-inflicted deaths in prison custody, England & Wales

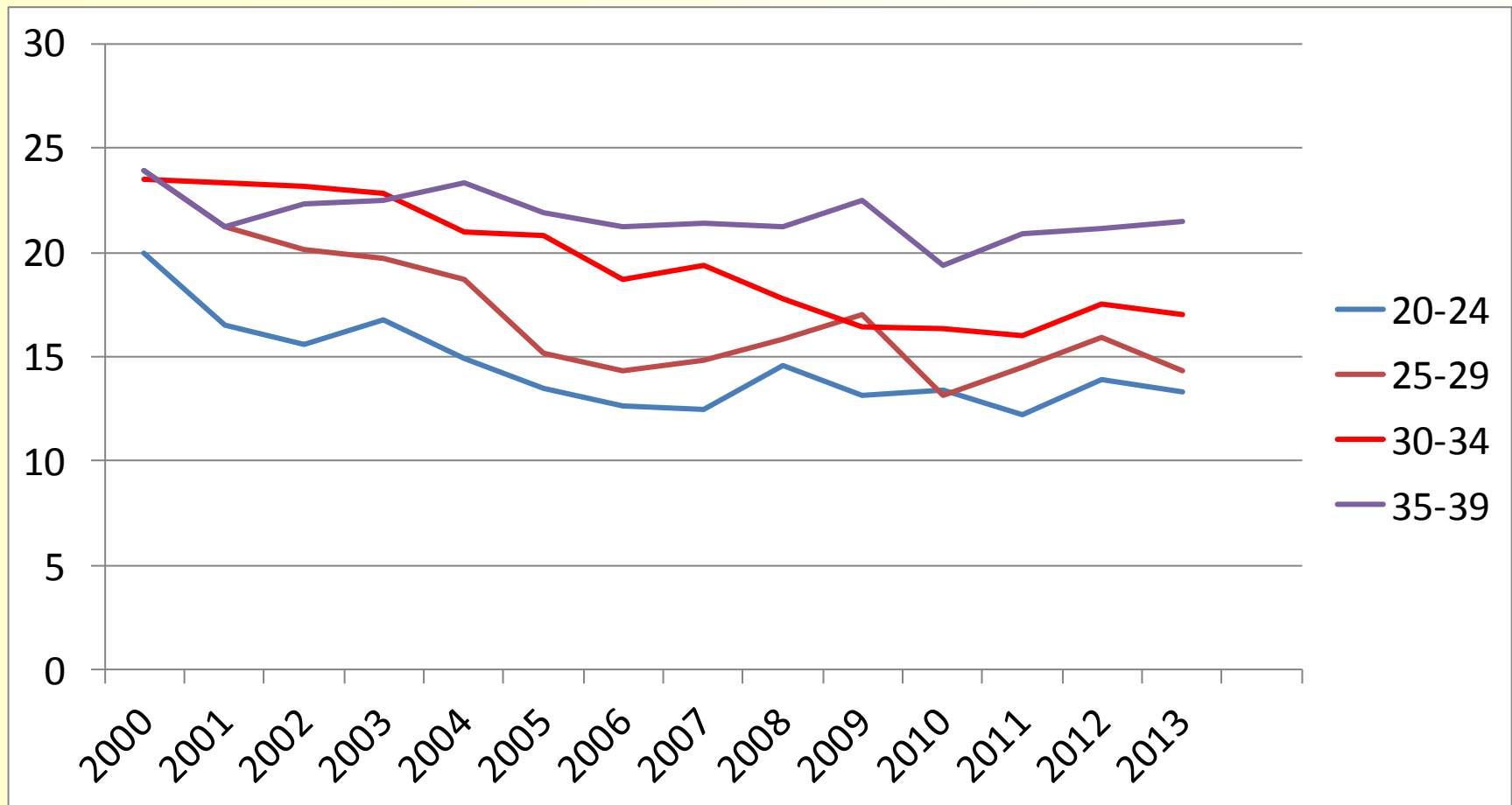
12 months ending Dec, rates per 100,000 prisoners



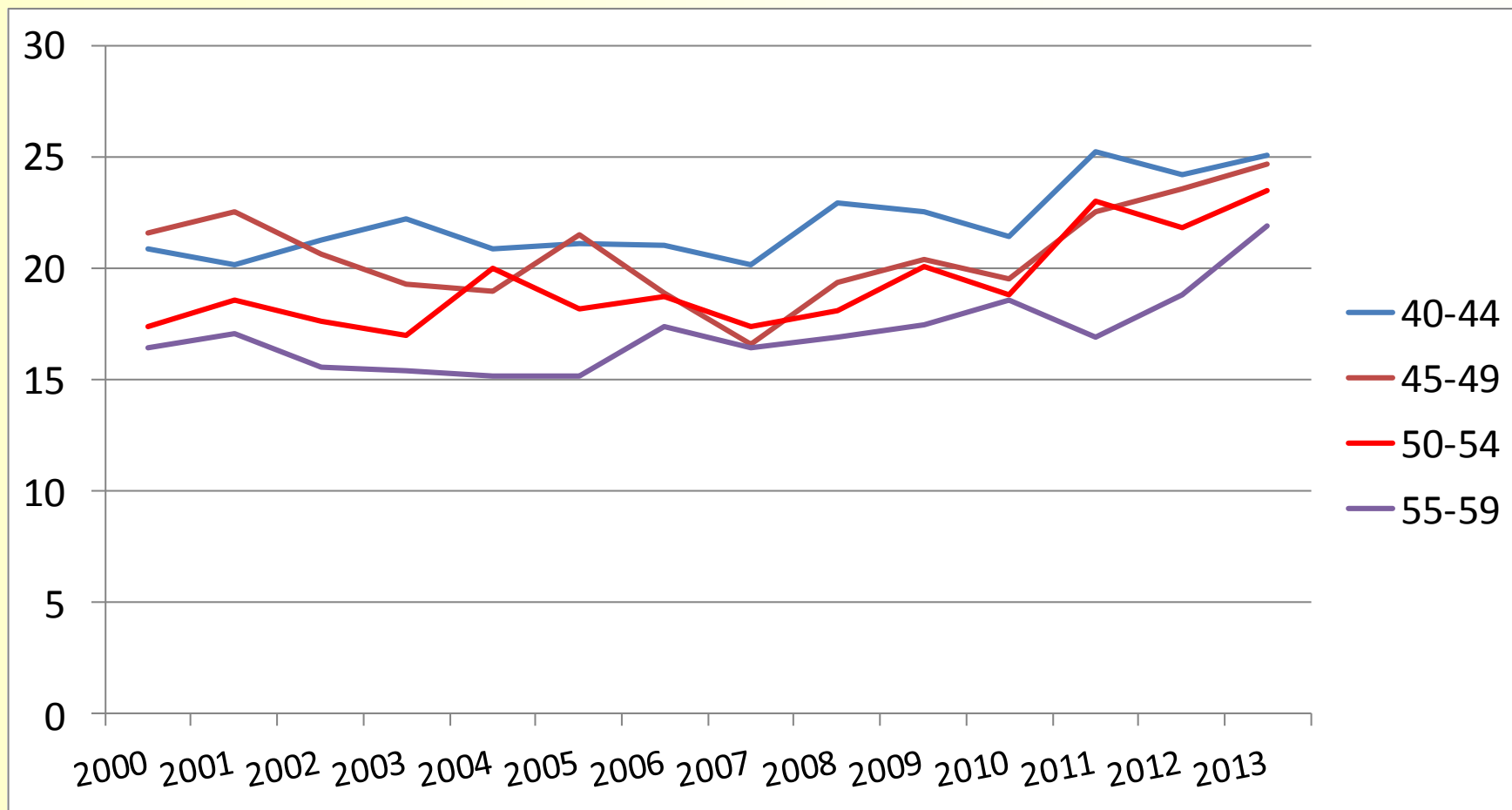
# Suicide rates by sex and age England and Wales 2000-2012



# Age-specific male suicide rates E&W 2000-2012



# Age-specific male suicide rates E&W 2000-2012



# Total prison service/NOMS staff FTE March 2000-Sept 2014

